

Latest edition?

The Service Kit Catalogue is only reprinted at long intervals. If you require the latest edition, please refer to service documentation in WebCAPS which is updated on a more regular basis.

Sources of product documentation

In addition to the printed Service Kit Catalogue, Grundfos offers the following sources of product documentation

- WinCAPS
- WebCAPS

WinCAPS

WinCAPS is a **Windows-based Computer Aided Product Selection** programme containing information on more than 185,000 Grundfos products.

WinCAPS is available on CD-ROM in more than 20 languages.

WinCAPS offers

- service parts
- detailed technical information
- selection of an optimum pump solution
- dimensional drawings of each pump
- detailed service documentation
- installation and operating instructions
- wiring diagrams of each pump.

WebCAPS

WebCAPS, **Web-based Computer Aided Product Selection**, is a web-version of WinCAPS.

WebCAPS is available on the Grundfos homepage, www.grundfos.com

WebCAPS offers

- service parts
- detailed technical information
- dimensional drawings of each pump
- wiring diagrams of each pump
- data booklets
- installation and operating instructions
- service videos
- service documentation
- CAD drawings (2- and 3-dimensional)
- product brochures
- case histories
- system guides
- system and concept brochures.

Shaft seal

The stamping code (variant code) of mechanical shaft seals is stamped on the pump nameplate. Indicated in the last position of the type designation, the stamping code consists of four letters.

Example	A	U	U	E
Grundfos type designation (1)				
Material of rotating face (2)				
Material of stationary seat (3)				
Material of secondary seal (4)				

Position 1 codes

Position 1 of the mechanical shaft seal variant code shows the Grundfos type designation.

The following codes can be shown in position 1:

Code	Description
A	O-ring seal with fixed seal driver
B	Bellows seal, rubber
C	O-ring seal with spring as seal driver
D	O-ring seal, balanced
E	O-ring seal, type A, cartridge
F	Bellows seal, type B, cartridge
G	Bellows seal, type B, with reduced seal faces
H	O-ring seal, type D, cartridge
K	Bellows seal, metal, type M, cartridge
M	Bellows seal, metal
O	Double seal, back-to-back
P	Double seal, tandem
Q	Seal with flush, quench seal
R	O-ring seal, type A, with reduced seal faces
S	Stuffing box
T	Floating gap seal
X	Miscellaneous

Positions 2 and 3 codes

Positions 2 and 3 of the mechanical shaft seal variant code show materials of rotating face and stationary seat.

The following codes can be shown in positions 2 and 3:

Code	Material
A	Carbon, metal-impregnated
B	Carbon, resin-impregnated
H (B/U)	Synthetic carbon Carbon with embedded tungsten carbide (hybrid)
C	Other carbons
D	Steel
N	Metals Bronze
S	Cast chromium steel
U	Tungsten carbide, chromium-nickel-molybdenum-bonded
Q	Carbides Q ₁ ^S : Dense, sintered, fine-grained silicon carbide (SiC) Q ₁ ^P : Porous, sintered, fine-grained silicon carbide (SiC) Q ₁ ^G : Graphite-containing, sintered silicon carbide (SiC)
V	Metal oxides Ceramic (aluminium oxide)

Position 4 codes

Position 4 of the mechanical shaft seal variant code shows the secondary seal material.

The following codes can be shown in position 4:

Code	Material
E	EPDM
F	FXM (Fluoraz [®])
V	FKM (Viton [®])
K	FFKM (Kalrez [®])
M	PTFE-sheathed O-ring
P	NBR (nitrile rubber)
S	Q (silicone rubber)
T	PTFE (Teflon [®])
X	Other elastomers

MTH/MTC 2, 4

50/60 Hz

Shaft seal kit

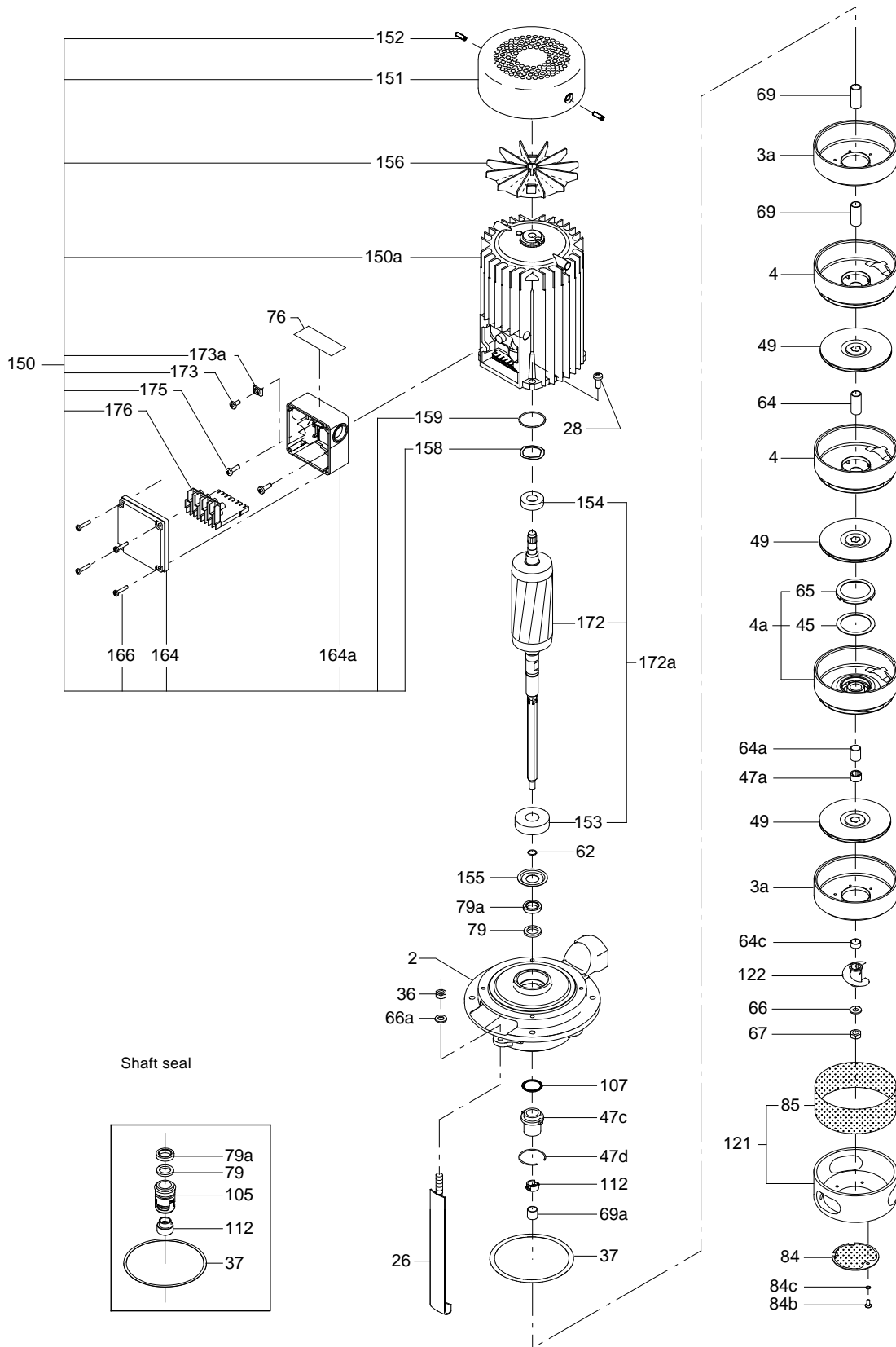
MTH/C 2, 4		
Pos.	Kit No	435045
Description		
AUUV		
37	Gasket	1
62	Stop ring	
79	Thrower	1
79a	Lip seal	1
105	Shaft seal	1
112	Spacing pipe	

Wear parts kit

Pos.	Kit No	MTH/C 2-30	MTH/C 2-50	MTH/C 4-20	MTH/C 4-40
		MTH/C 2-40	MTH/C 2-60	MTH/C 4-30	MTH/C 4-50
Description			MTH/C 2-90		MTH/C 4-60
			MTH/C 2-100		MTH/C 4-80
		435032	435033	445057	445058
4a	Bearing chamber		1		1
36	Nut	3	3	3	3
37	Gasket	1	1	1	1
45	Neck ring	4	5		
47a	Bearing ring		1		1
62	Stop ring	1	1	1	1
64a	Spacing pipe 7.8 mm	1	1		
65	Neck ring retainer	4	5		
66	Spring washer	1	1	1	1
66a	Washer	3	3	3	3
67	Lock nut	1	1	1	1
122	Priming screw	1	1		

Metal terminal box kit

Models			All
Pos.	Kit No	405179	
Description			
164a	Terminal box with gasket	1	
164	Terminal box cover with gasket	1	
166	Screw	4	
175	Screw	4	
176	Terminal complete	1	



TM02 5297 2502q

MTH, MTC 8, 12, 16

50/60 Hz

Shaft seal kit

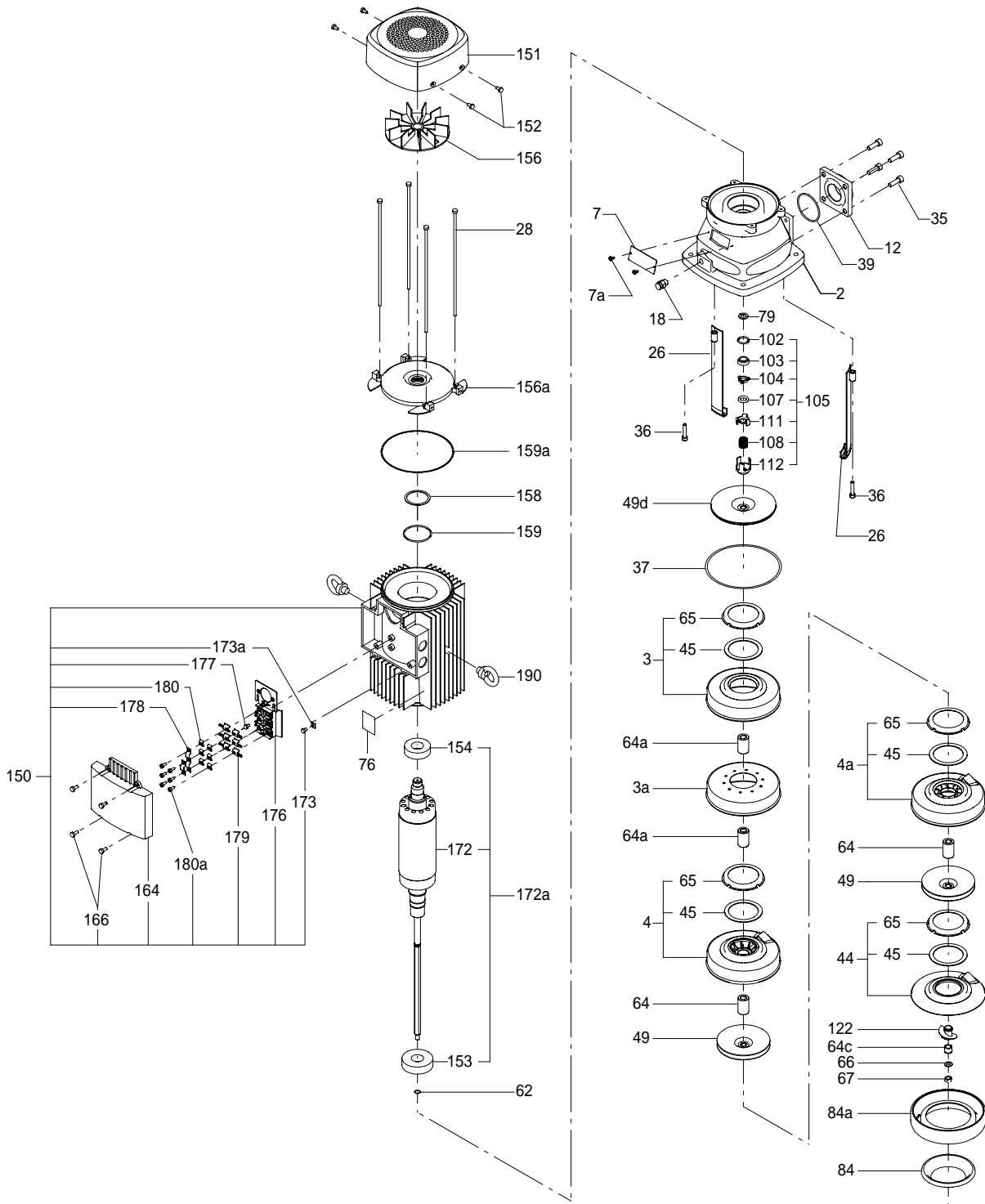
MTH/MTC 8, 12, 16		
Pos.	Kit No	96431994
Description		
AUUV		
37	O-ring, for pumps produced after 0643 (yyww)	1
105	Shaft seal complete	1

Wear parts kit

		MTH/MTC 8/12	MTH/MTC 16
Pos.	Kit No	96435991	96435992
Description			
4a	Bearing chamber	1	1
37	Gasket 145/138 x 0.25	1	1
45	Neck ring	7	4
45b	Neck ring		1
49c	Impeller wear ring		4
64	29 mm	6	
	28.5 mm	4	3
64a	Spacing pipe	30 mm	6
64b		15 mm	
64c		10.5 mm	
64d		10 mm	
65	Neck ring retainer	7	4
65a	Neck ring retainer		1
66	Spring washer	1	1
67	Lock nut, M8	1	1
69	Spacing pipe 5.8 mm		1

Metal terminal box kit

		MG 71/80
Pos.	Kit No	405179
Description		
164a	Terminal box with gasket	1
164	Terminal box cover with gasket	1
166	Screw	4
175	Screw	4
176	Terminal complete	1



TMO1 6378 4300